



# Soil-pipeline interaction on slopes under earthquake loading

**Exchange-Risk Workshop**

**Resilience of natural gas pipeline networks to natural hazards**

**Bristol, 1 September 2016**

**Amir M. Kaynia**

Discipline Lead, Vibration and Earthquake Engineering, NGI

Adjunct Professor, Norwegian University of Science and Technology, NTNU

# OUTLINE

- ↷ Background
- ↷ Developed computational model
- ↷ Special features
- ↷ Application
- ↷ Representative results
- ↷ Developed model vs typical models used in practice
- ↷ Typical results
- ↷ Effect of special features of developed model
- ↷ Conclusions

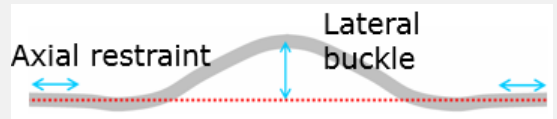
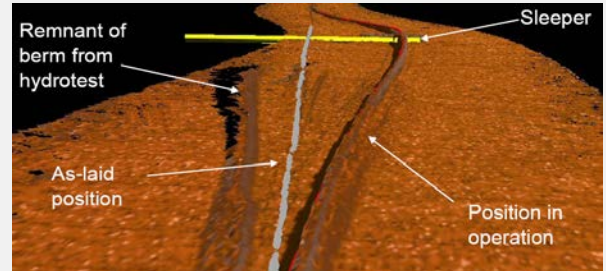
# Background

# Background

- Extensive research has been carried out on response of pipelines on soft seabed (e.g. SAFEBUCK JIP). The research has focused on, among others, buckling and pipeline walking.

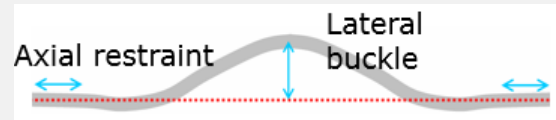
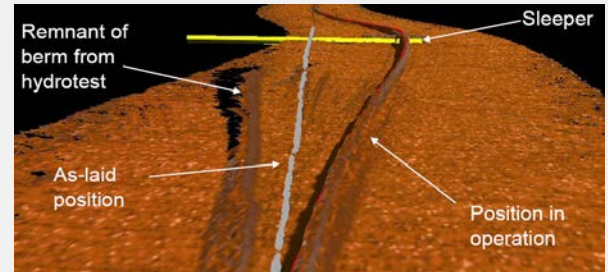
# Background

- Extensive research has been carried out on response of pipelines on soft seabed (e.g. SAFEBUCK JIP). The research has focused on, among others, buckling and pipeline walking.



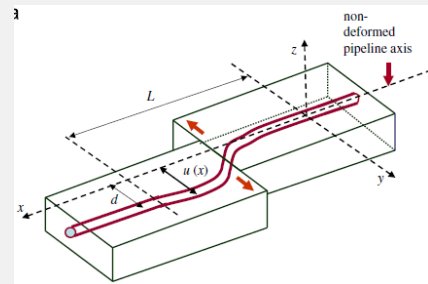
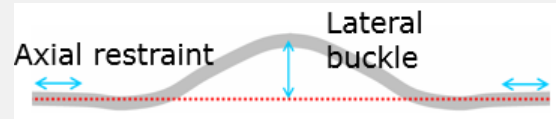
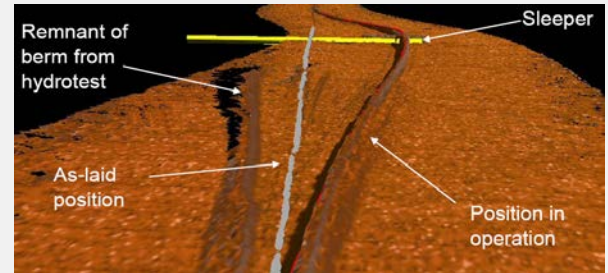
# Background

- Extensive research has been carried out on response of pipelines on soft seabed (e.g. SAFEBUCK JIP). The research has focused on, among others, buckling and pipeline walking.
- Research is still lagging behind on earthquake response.
- The earthquake response has primarily dealt with response of onshore buried pipelines to permanent ground motions, faults and wave propagation.



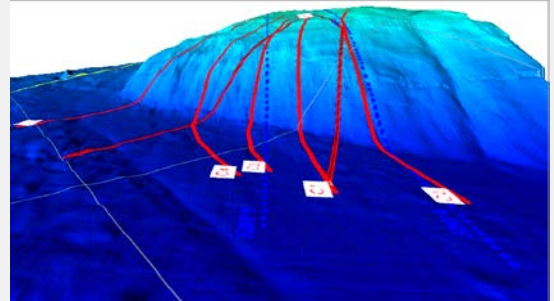
# Background

- Extensive research has been carried out on response of pipelines on soft seabed (e.g. SAFEBUCK JIP). The research has focused on, among others, buckling and pipeline walking.
- Research is still lagging behind on earthquake response.
- The earthquake response has primarily dealt with response of onshore buried pipelines to permanent ground motions, faults and wave propagation.



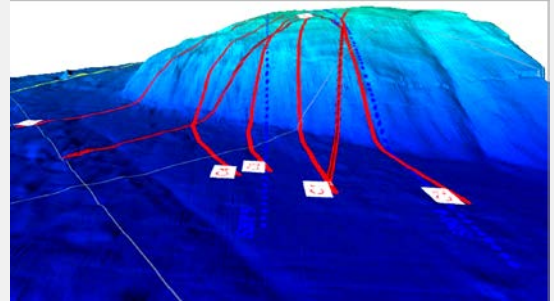
# Pipelines on slopes

- Considering soft soil conditions of most offshore pipelines, earthquake forces due to soil strains are often small compared to onshore buried pipelines.



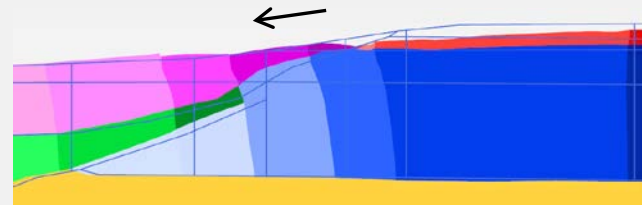
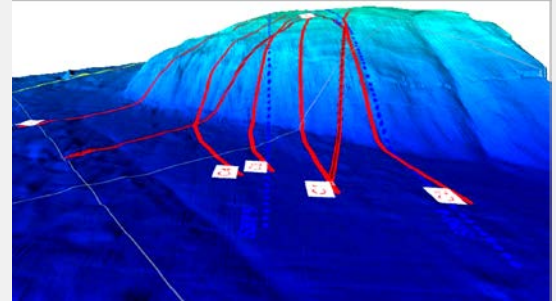
# Pipelines on slopes

- Considering soft soil conditions of most offshore pipelines, earthquake forces due to soil strains are often small compared to onshore buried pipelines.
- However, offshore pipelines are vulnerable to permanent ground motions caused by earthquakes.
- Common cases are pipelines traversing submarine slopes which tend to experience large downslope displacements due to earthquakes.



# Pipelines on slopes

- Considering soft soil conditions of most offshore pipelines, earthquake forces due to soil strains are often small compared to onshore buried pipelines.
- However, offshore pipelines are vulnerable to permanent ground motions caused by earthquakes.
- Common cases are pipelines traversing submarine slopes which tend to experience large downslope displacements due to earthquakes.



Downslope displacements due to earthquake

# Pipelines on slopes

Numerical model for 3-D  
earthquake response of pipeline  
on slopes. Relevant issues are:

# Pipelines on slopes

Numerical model for 3-D earthquake response of pipeline on slopes. Relevant issues are:

- Inertial loads in pipeline due to pipe mass (as opposed to static conditions, dynamic loads are large).

# Pipelines on slopes

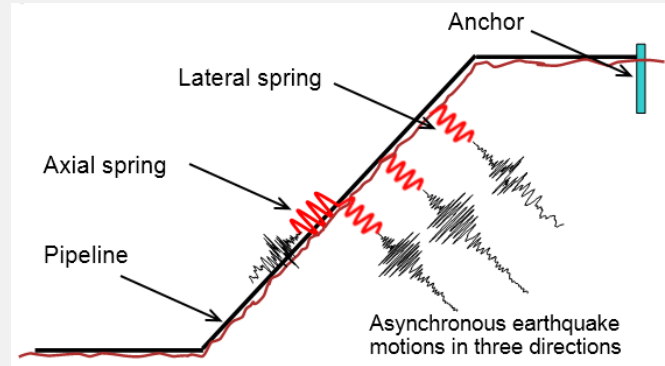
Numerical model for 3-D earthquake response of pipeline on slopes. Relevant issues are:

- Inertial loads in pipeline due to pipe mass (as opposed to static conditions, dynamic loads are large).
- Asynchronous ground accelerations due to long extension of pipeline and topographic features.

# Pipelines on slopes

Numerical model for 3-D earthquake response of pipeline on slopes. Relevant issues are:

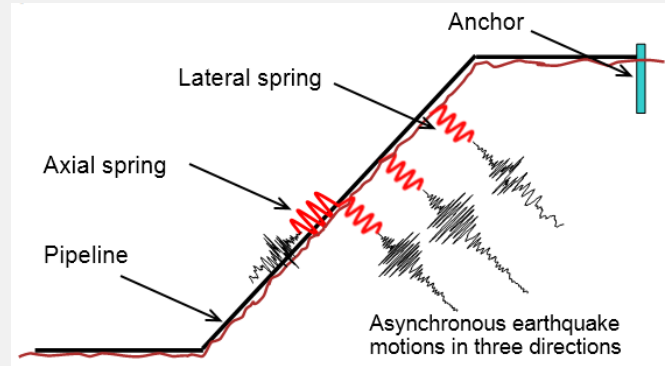
- Inertial loads in pipeline due to pipe mass (as opposed to static conditions, dynamic loads are large).
- Asynchronous ground accelerations due to long extension of pipeline and topographic features.



# Pipelines on slopes

Numerical model for 3-D earthquake response of pipeline on slopes. Relevant issues are:

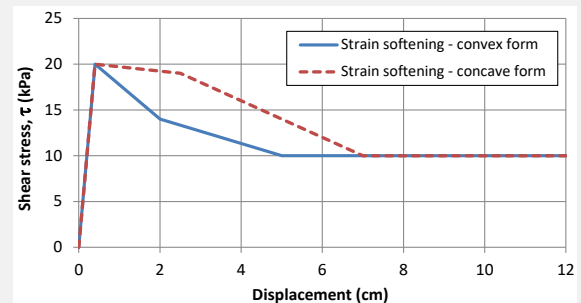
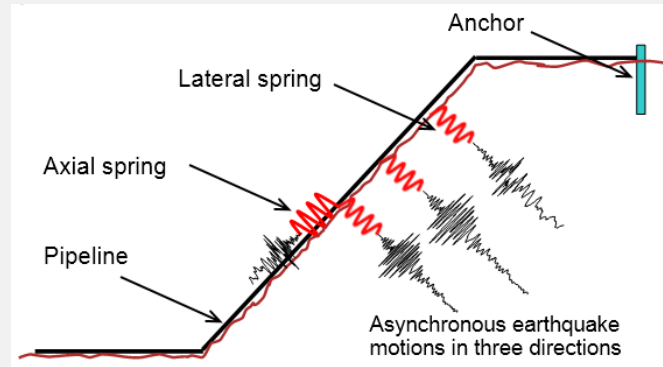
- Inertial loads in pipeline due to pipe mass (as opposed to static conditions, dynamic loads are large).
- Asynchronous ground accelerations due to long extension of pipeline and topographic features.
- Strain-softening behavior at soil-pipeline interface.



# Pipelines on slopes

Numerical model for 3-D earthquake response of pipeline on slopes. Relevant issues are:

- Inertial loads in pipeline due to pipe mass (as opposed to static conditions, dynamic loads are large).
- Asynchronous ground accelerations due to long extension of pipeline and topographic features.
- Strain-softening behavior at soil-pipeline interface.



# Pipelines on slopes

# Pipelines on slopes

Pipe-soil interaction analysis  
is divided into two steps:

# Pipelines on slopes

Pipe-soil interaction analysis  
is divided into two steps:

- 1) computation of earthquake accelerations on slope - for this step, one could use available 2D/3D FE/FD codes

# Pipelines on slopes

Pipe-soil interaction analysis  
is divided into two steps:

- 1) computation of earthquake accelerations on slope - for this step, one could use available 2D/3D FE/FD codes

# Pipelines on slopes

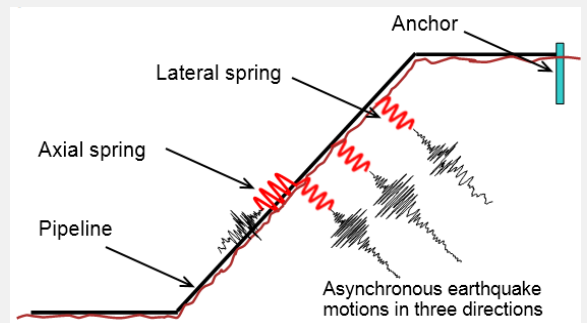
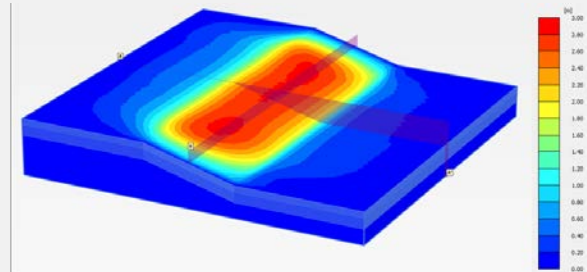
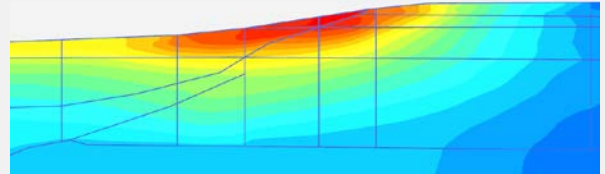
Pipe-soil interaction analysis is divided into two steps:

- 1) computation of earthquake accelerations on slope - for this step, one could use available 2D/3D FE/FD codes
- 2) response of pipeline to seabed accelerations. For this step, we have developed *QUIVER\_pipe* (Kaynia, 2012)

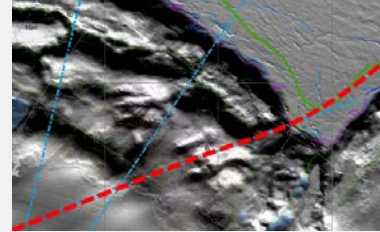
# Pipelines on slopes

Pipe-soil interaction analysis is divided into two steps:

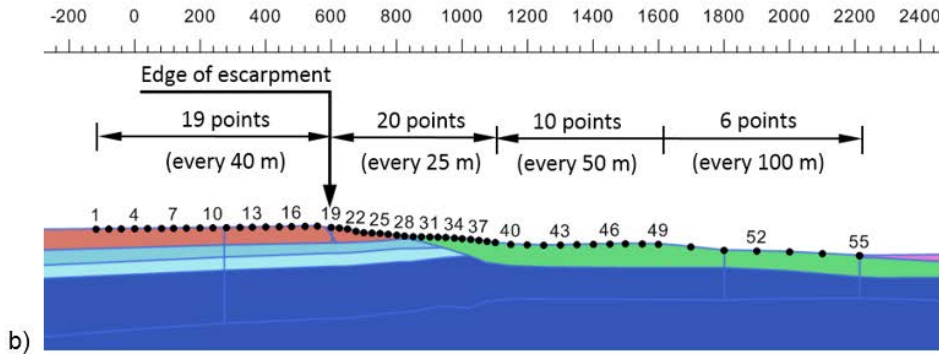
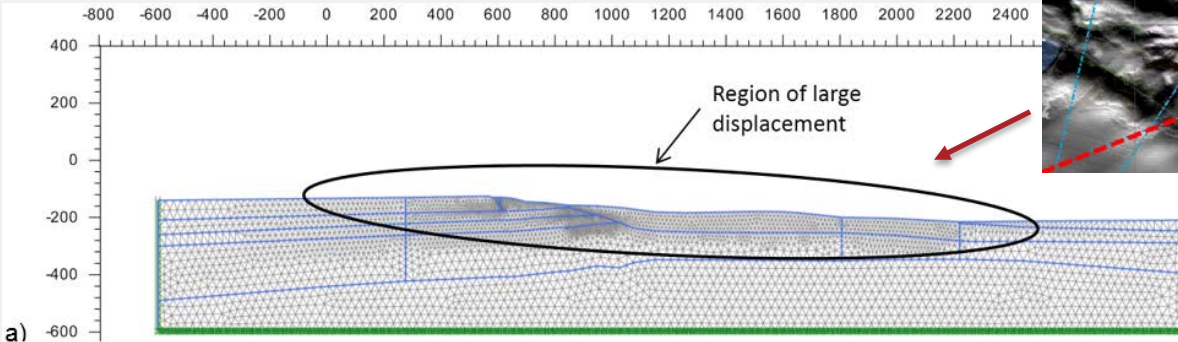
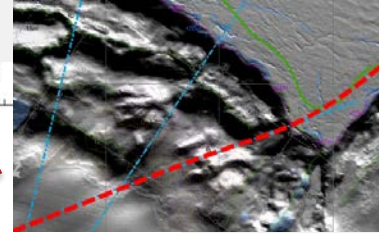
- 1) computation of earthquake accelerations on slope - for this step, one could use available 2D/3D FE/FD codes
- 2) response of pipeline to seabed accelerations. For this step, we have developed *QUIVER\_pipe* (Kaynia, 2012)



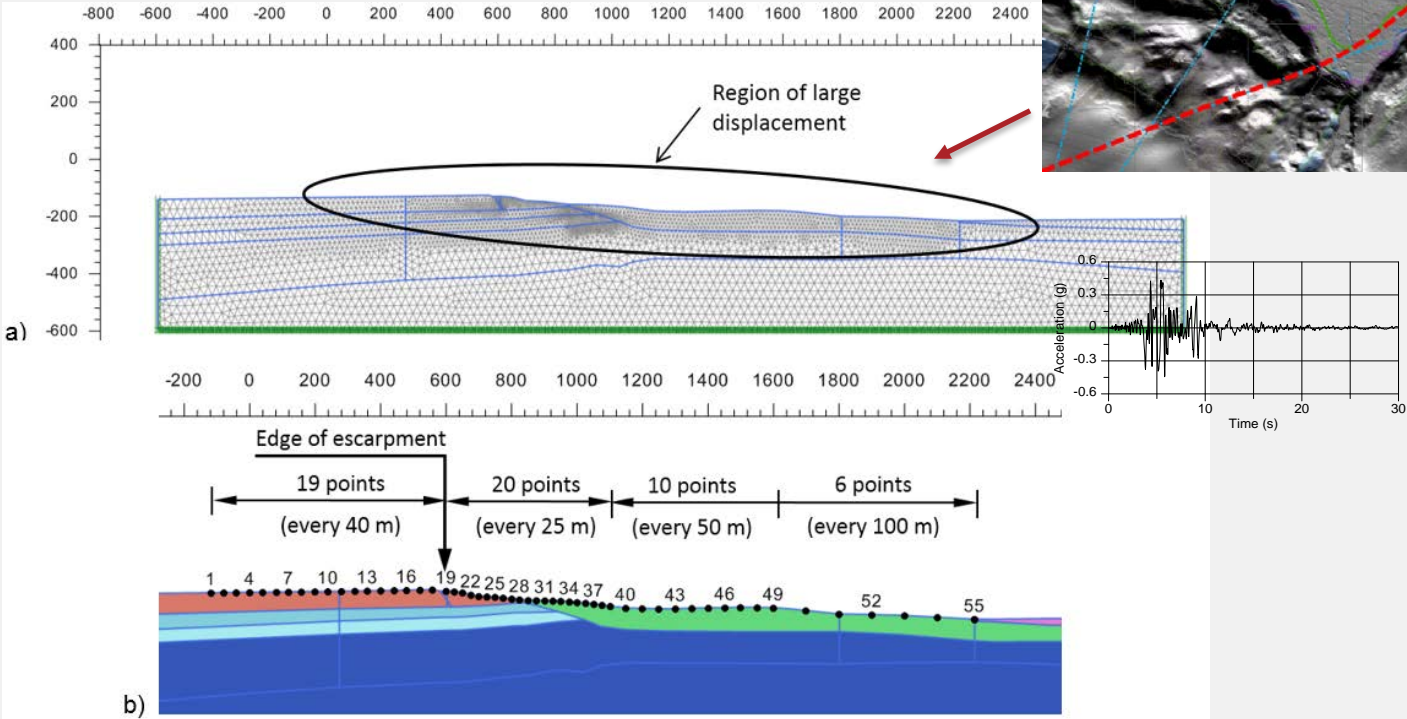
# Pipelines on slopes – Case study



# Pipelines on slopes – Case study



# Pipelines on slopes – Case study

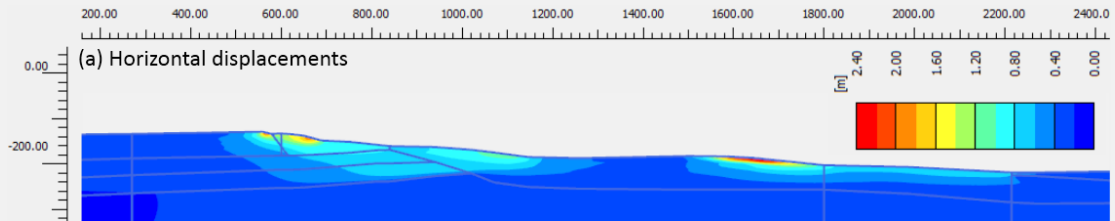


# Pipelines on slopes – Case study

Results of 2-D FEM analyses of slope

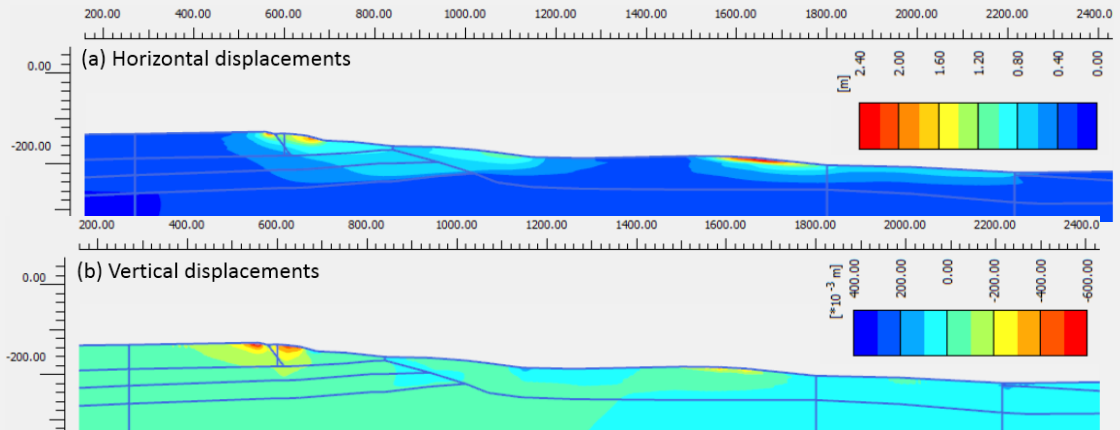
# Pipelines on slopes – Case study

## Results of 2-D FEM analyses of slope



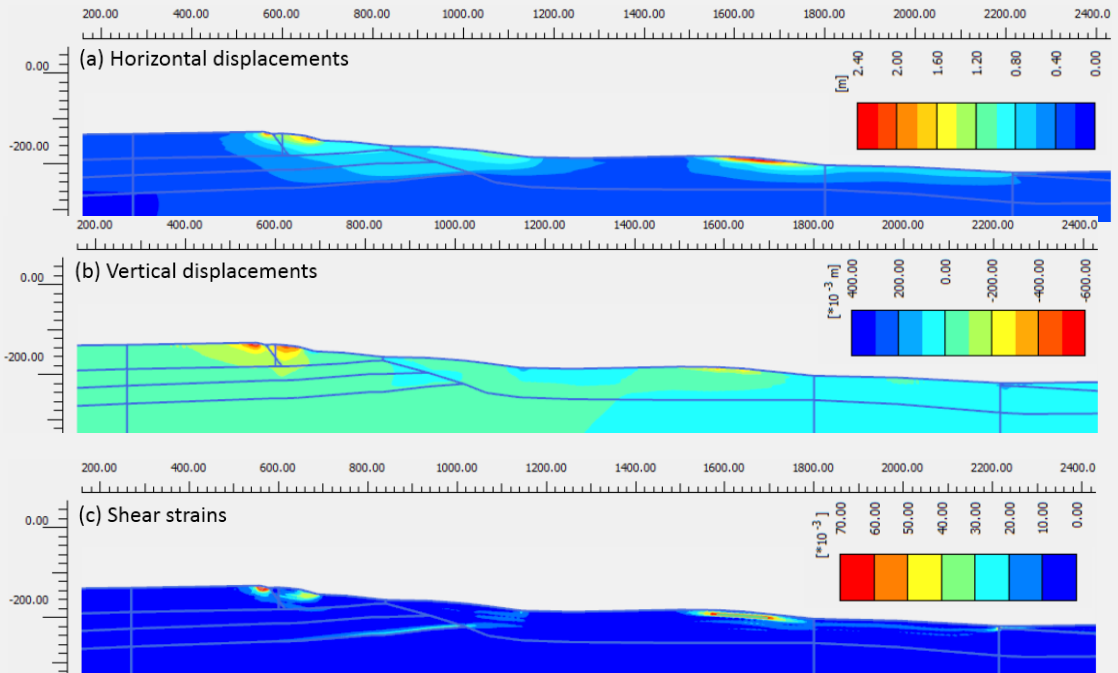
# Pipelines on slopes – Case study

## Results of 2-D FEM analyses of slope



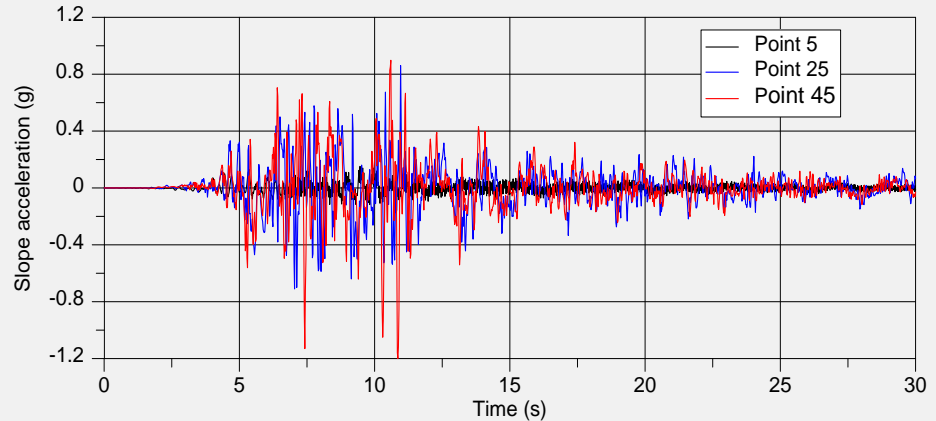
# Pipelines on slopes – Case study

## Results of 2-D FEM analyses of slope



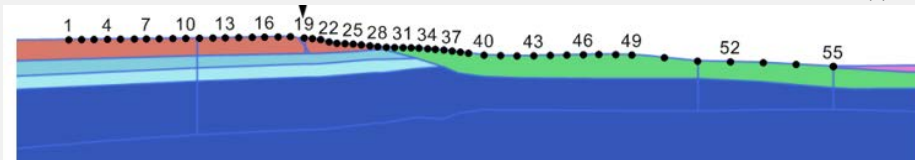
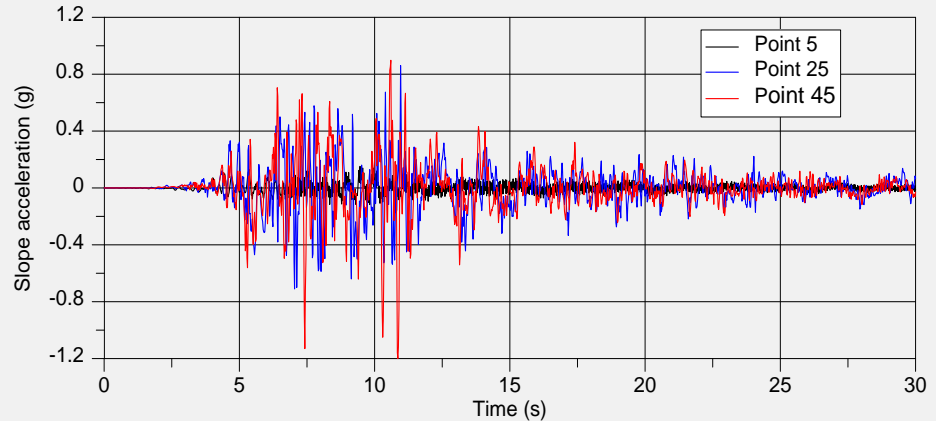
# Pipelines on slopes – Case study

- Typical results – acceleration time histories at several points:  
large variations along slope



# Pipelines on slopes – Case study

- Typical results – acceleration time histories at several points: large variations along slope

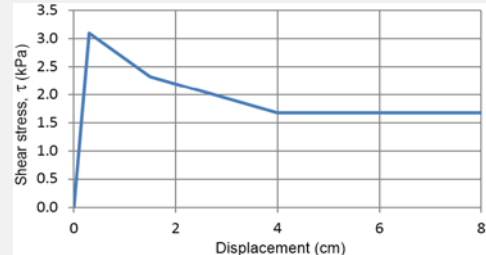


# Pipelines on slopes – Case study

- Pipe-soil interaction spring in axial direction established based on model tests in laboratory.

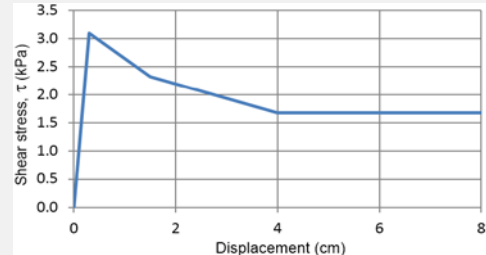
# Pipelines on slopes – Case study

- Pipe-soil interaction spring in axial direction established based on model tests in laboratory.



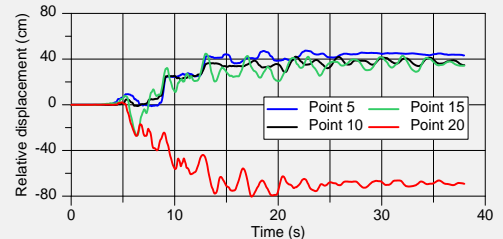
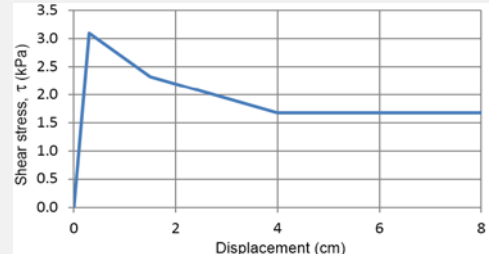
# Pipelines on slopes – Case study

- Pipe-soil interaction spring in axial direction established based on model tests in laboratory.
- Time histories of displacements of pipeline relative to soil at selected points on seabed



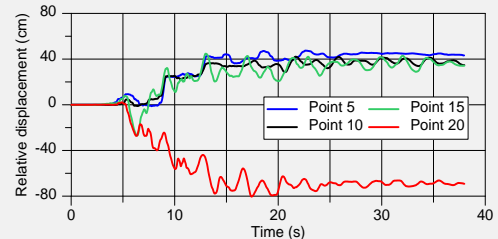
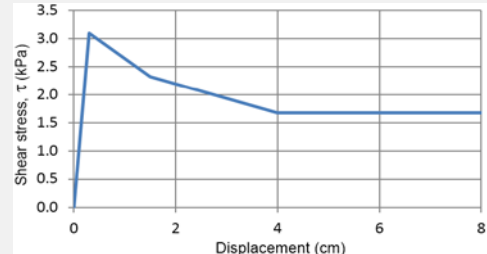
# Pipelines on slopes – Case study

- Pipe-soil interaction spring in axial direction established based on model tests in laboratory.
- Time histories of displacements of pipeline relative to soil at selected points on seabed



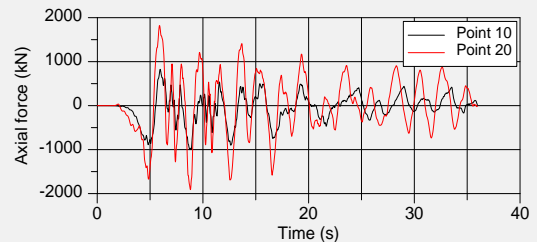
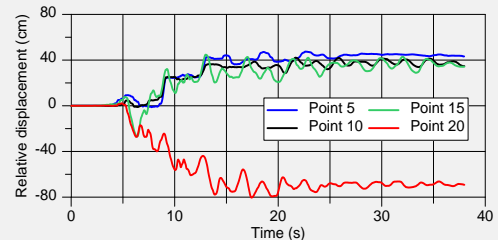
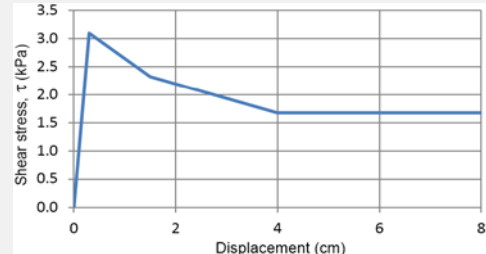
# Pipelines on slopes – Case study

- Pipe-soil interaction spring in axial direction established based on model tests in laboratory.
- Time histories of displacements of pipeline relative to soil at selected points on seabed
- Time histories of axial force in pipeline at selected points on seabed (note both tension and compression).



# Pipelines on slopes – Case study

- Pipe-soil interaction spring in axial direction established based on model tests in laboratory.
- Time histories of displacements of pipeline relative to soil at selected points on seabed
- Time histories of axial force in pipeline at selected points on seabed (note both tension and compression).

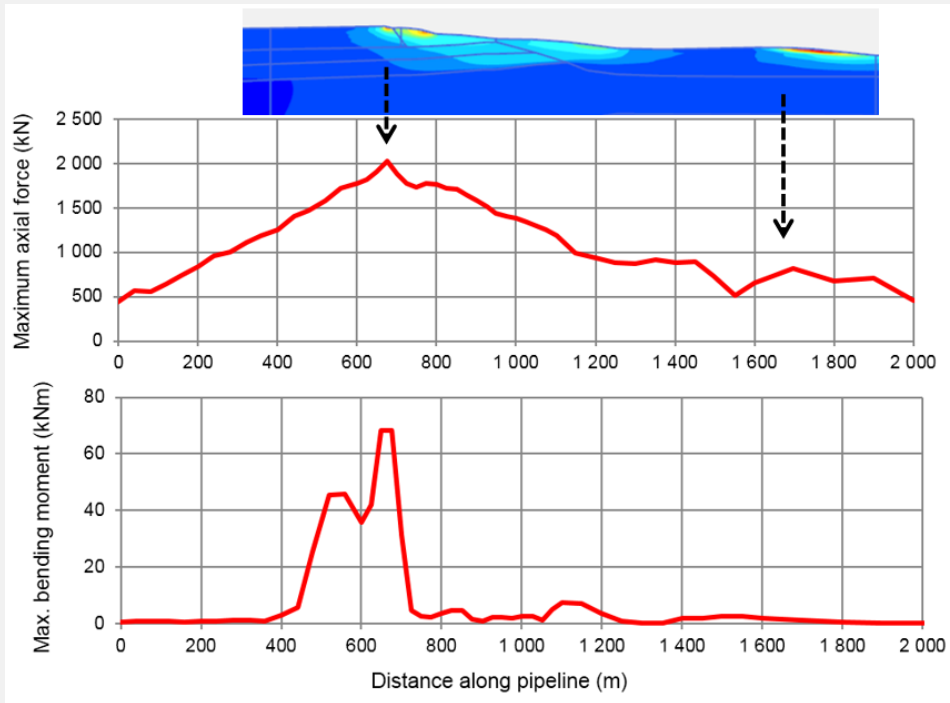


# Pipelines on slopes – Case study

Maximum axial forces and bending moments in pipeline

# Pipelines on slopes – Case study

Maximum axial forces and bending moments in pipeline

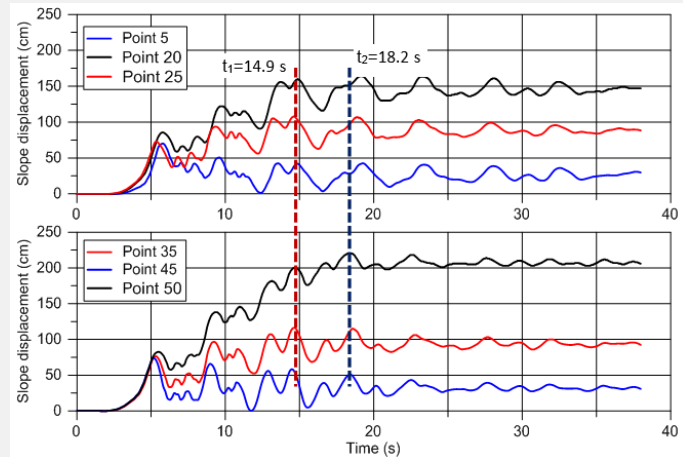


# Pseudo-Static Approach

- In practice, pipelines are often analyzed by pseudo-static method.
- In this method, the concurrent displacements on the slope are applied statically to the pipe-soil model, and the inertial forces in the pipeline are ignored.

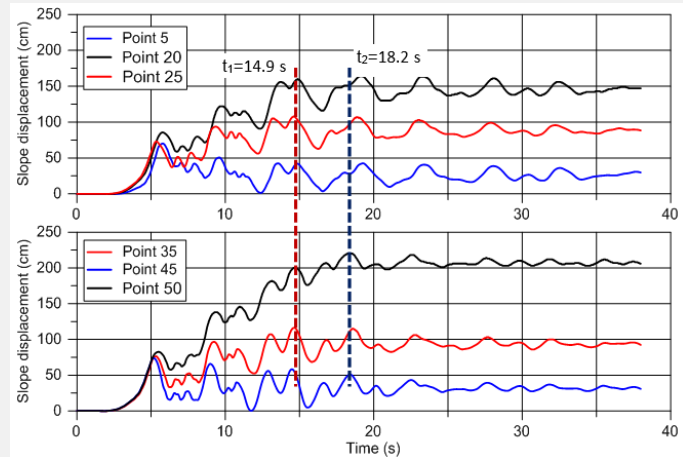
# Pseudo-Static Approach

- In practice, pipelines are often analyzed by pseudo-static method.
- In this method, the concurrent displacements on the slope are applied statically to the pipe-soil model, and the inertial forces in the pipeline are ignored.



# Pseudo-Static Approach

- In practice, pipelines are often analyzed by pseudo-static method.
- In this method, the concurrent displacements on the slope are applied statically to the pipe-soil model, and the inertial forces in the pipeline are ignored.
- Disadvantages: 1) need for analyses at many time steps, 2) excluding inertial force in pipe is not conservative.

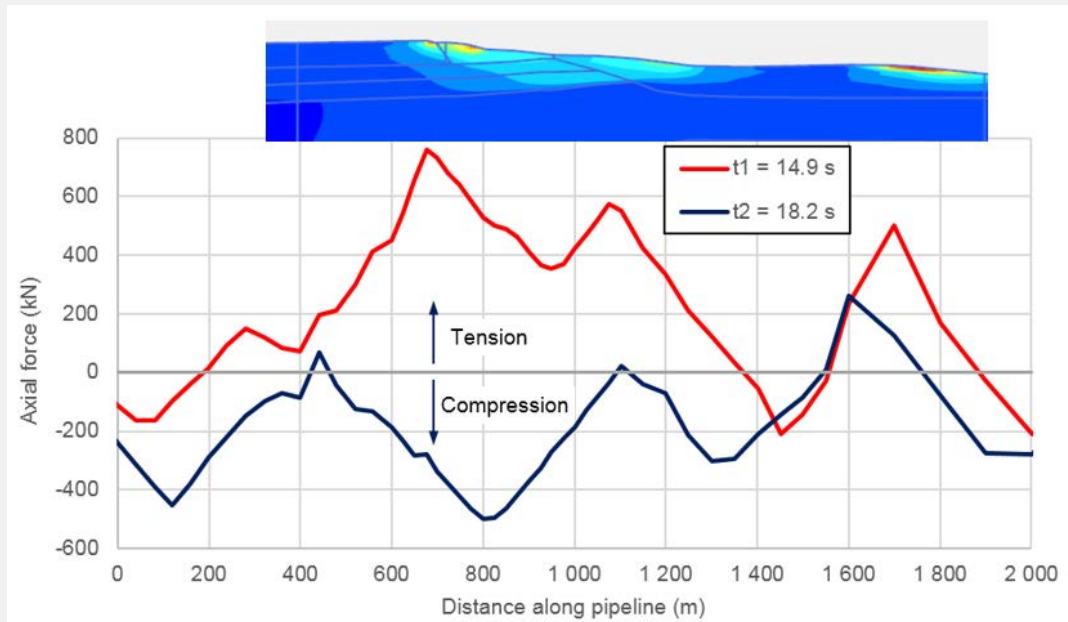


# Pipelines on slopes – Case study

Computed axial forces along pipeline by conventional pseudo-static method at two selected time steps – not realistic!

# Pipelines on slopes – Case study

Computed axial forces along pipeline by conventional pseudo-static method at two selected time steps – not realistic!



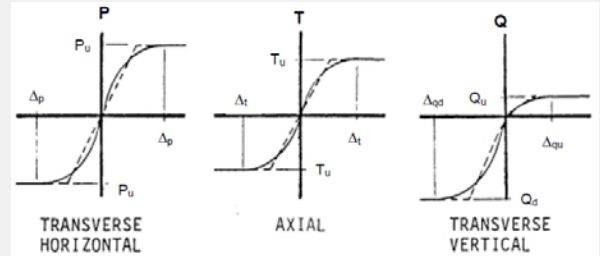
# Effect of Strain Softening

# Effect of Strain Softening

- Most existing models use soil springs with perfectly plastic response after yield (no strain softening).

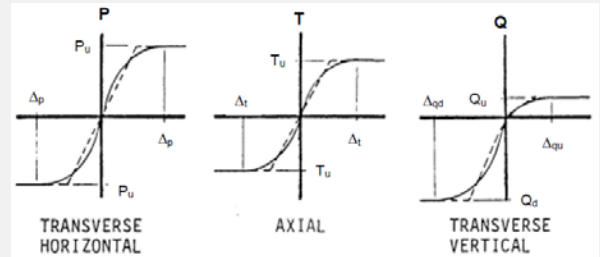
# Effect of Strain Softening

- Most existing models use soil springs with perfectly plastic response after yield (no strain softening).



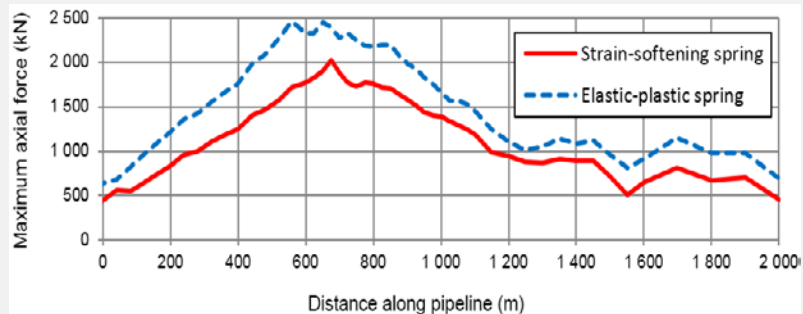
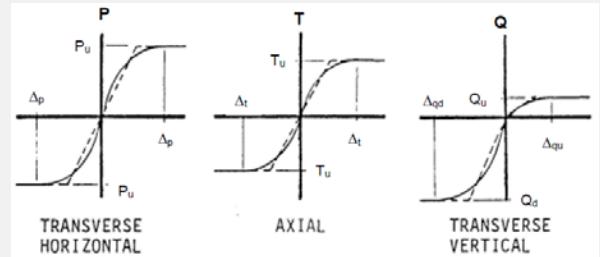
# Effect of Strain Softening

- Most existing models use soil springs with perfectly plastic response after yield (no strain softening).
- Comparison of computed forces with and without strain softening springs.



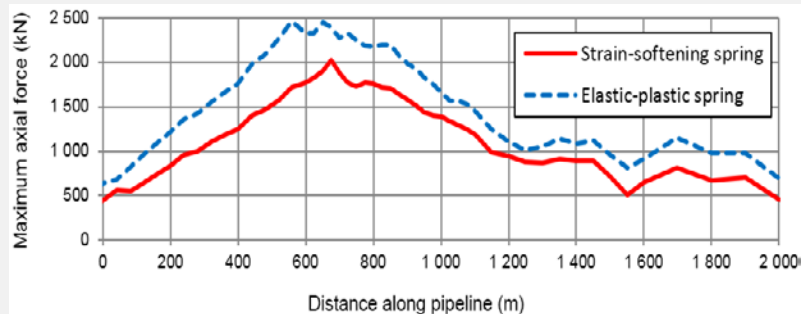
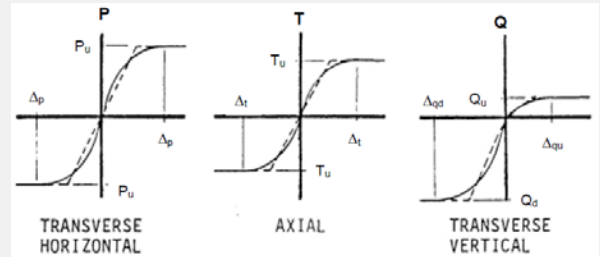
# Effect of Strain Softening

- Most existing models use soil springs with perfectly plastic response after yield (no strain softening).
- Comparison of computed forces with and without strain softening springs.



# Effect of Strain Softening

- Most existing models use soil springs with perfectly plastic response after yield (no strain softening).
- Comparison of computed forces with and without strain softening springs.
- Strain softening helps reduce forces in pipeline; positive feature in design.



# Summary & Conclusions

## Summary & Conclusions

- Results of a real case study using Computational Model (*QUIVER\_pipe*) were presented and special features of computed responses discussed.

## Summary & Conclusions

- Results of a real case study using Computational Model (*QUIVER\_pipe*) were presented and special features of computed responses discussed.
- Largest forces often occur at places on the slope which experience largest displacement gradients.

## Summary & Conclusions

- Results of a real case study using Computational Model (*QUIVER\_pipe*) were presented and special features of computed responses discussed.
- Largest forces often occur at places on the slope which experience largest displacement gradients.
- Consideration of strain softening behavior of soil springs often reduces earthquake-induced forces in pipelines.

## Summary & Conclusions

- Results of a real case study using Computational Model (*QUIVER\_pipe*) were presented and special features of computed responses discussed.
- Largest forces often occur at places on the slope which experience largest displacement gradients.
- Consideration of strain softening behavior of soil springs often reduces earthquake-induced forces in pipelines.
- Common analysis methods based on pseudo-static method are not conservative.

Thank you for your attention